

**Padstow Harbour Passage Plan:  
NOT TO BE USED FOR NAVIGATION**

Courses are indicative only and may be modified to suit prevailing conditions.

PHC advise not to passage over the Doom Bar HW+ 3 hours.

Please call Berthing Master on Ch 12 whilst making your way up the estuary. BM on duty 2 hours either side of HW.

PHC Harbour Office  
VHF: Ch 12  
Tel: +44(0)1841 532239  
Email: padstowharbour@btconnect.com  
Web: www.padstow-harbour.co.uk

Pilot Point

**Doom Bar**

Dangerous breaking seas may occur across the bar during times when there is a heavy swell running – particularly when the tide height is below half water.

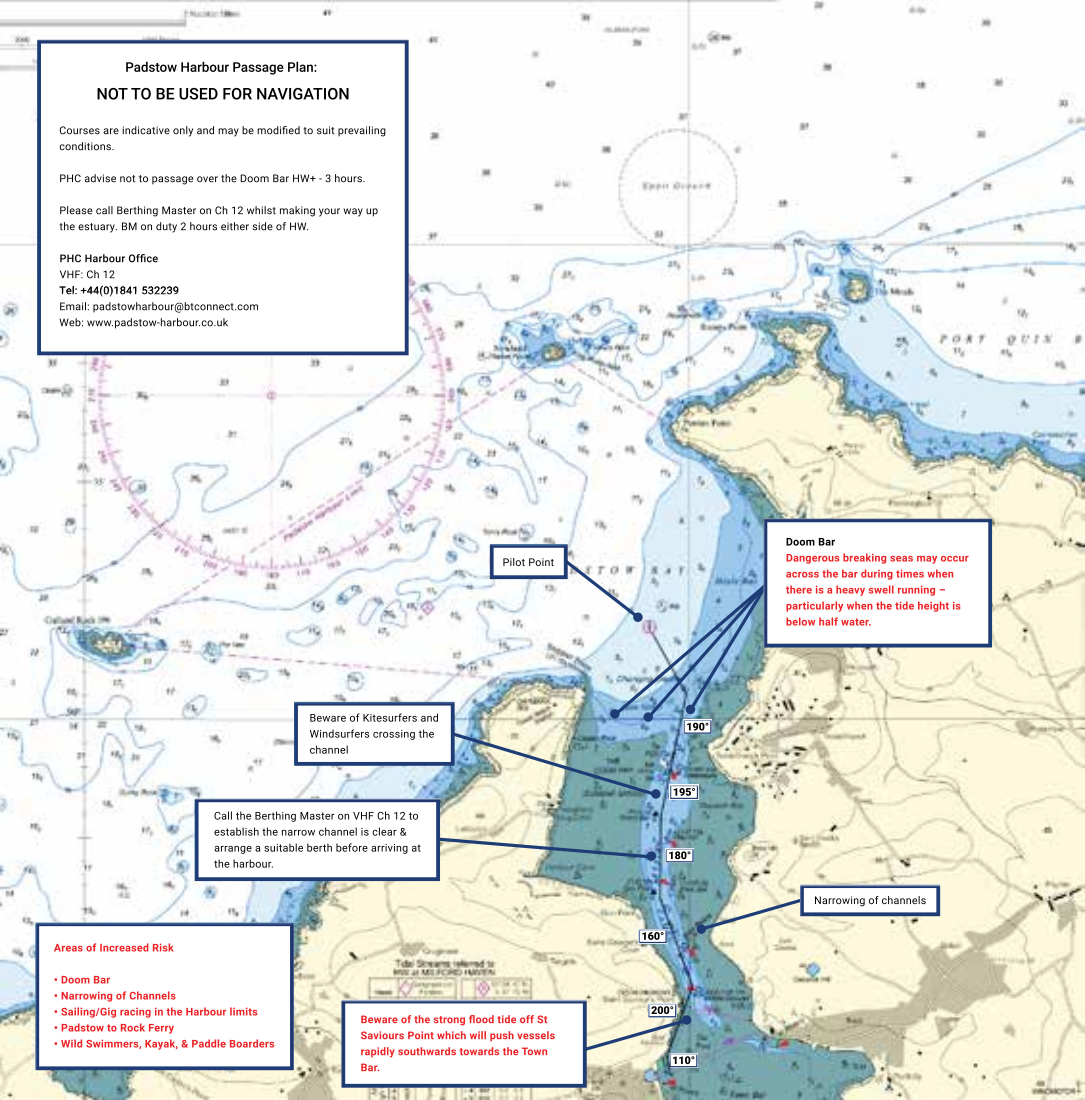
Beware of Kitesurfers and Windsurfers crossing the channel

Call the Berthing Master on VHF Ch 12 to establish the narrow channel is clear & arrange a suitable berth before arriving at the harbour.

**Areas of Increased Risk**

- Doom Bar
- Narrowing of Channels
- Sailing/Gig racing in the Harbour limits
- Padstow to Rock Ferry
- Wild Swimmers, Kayak, & Paddle Boarders

Beware of the strong flood tide off St Saviours Point which will push vessels rapidly southwards towards the Town Bar.





Passage to Wadebridge. Proceed with caution  
due to changing depths and channels.

Mussel/Oyster Beds

# RIVER CAMEL PADSTOW TO WADEBRIDGE

SCALE 1:35 000

Magnetic Variation: 1°26' W 2021 (12 E)



North Arrow

North Arrow